



深圳市睿凡讯连科技有限公司

SHENZHEN RFCOMS TECHNOLOGY CO.,LTD

Connector,Cable,Testlead,  
Adapter,RF&MICROWAVE

## SMA-JK6-2-1

### Features:

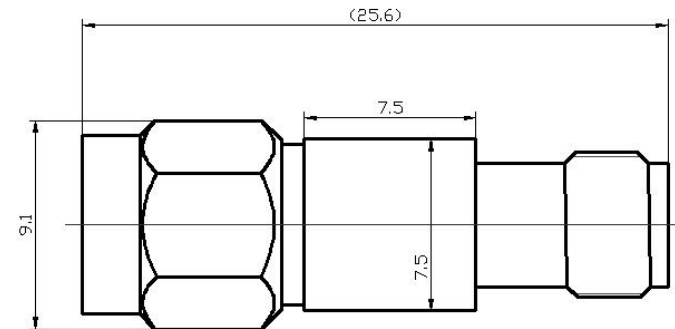
**Frequency:** DC-6GHz

**Attenuation:** 1dB

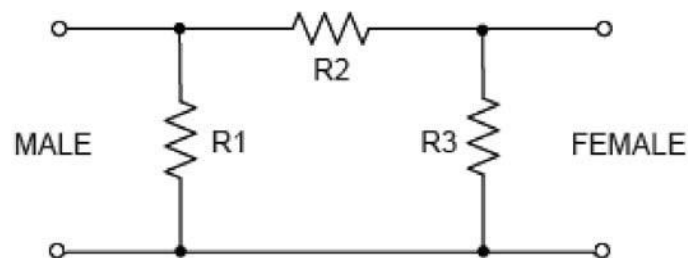
**Input Pwr.:** 2w

**VSWR:** 1.25(max); 1.10(typ.)

**Connector:** SMA(M) – SMA(F)



### Electrical Schematic



### Typical Performance Data

Frequency (GHz)	Attenuation (dB)	VSWR (:1)
0.1	0.72	1.01
1	0.81	1.03
2	0.82	1.03
3	0.84	1.06
4	1.00	1.06
5	1.08	1.04
6	0.99	1.05



深圳市睿凡讯连科技有限公司

SHENZHEN RFCOMS TECHNOLOGY CO.,LTD

Connector,Cable,Testlead,  
Adapter,RF&MICROWAVE

## SMA-JK6-2-2

### Features:

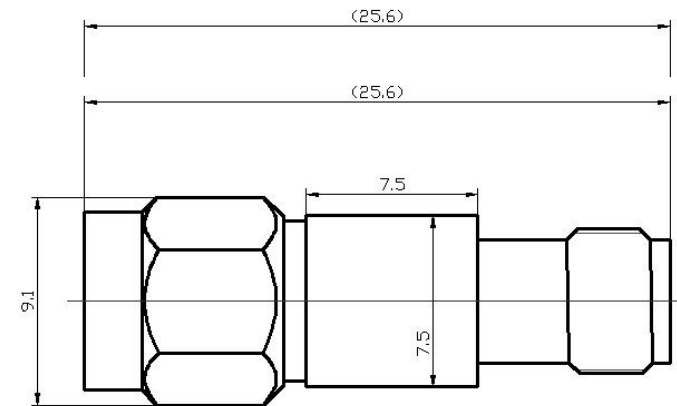
**Frequency:** DC-6GHz

**Attenuation:** 2dB

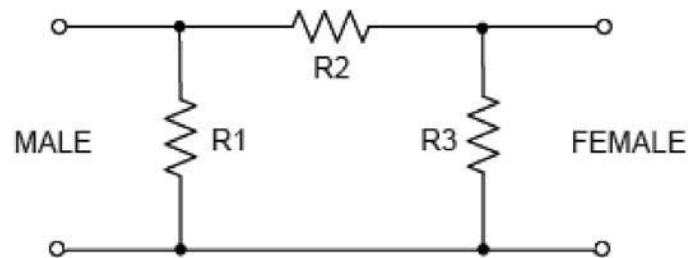
**Input Pwr.:** 2w

**VSWR:** 1.25(max); 1.15(typ.)

**Connector:** SMA(M) – SMA(F)



### Electrical Schematic



Typical Performance Data

Frequency (GHz)	Attenuation (dB)	VSWR (:1)
0.1	1.72	1.01
1	1.82	1.04
2	1.85	1.06
3	1.87	1.07
4	2.06	1.08
5	2.18	1.08
6	2.20	1.10



深圳市睿凡讯连科技有限公司

SHENZHEN RFCOMS TECHNOLOGY CO.,LTD

Connector,Cable,Testlead,  
Adapter,RF&MICROWAVE

## SMA-JK6-2-3

### Features:

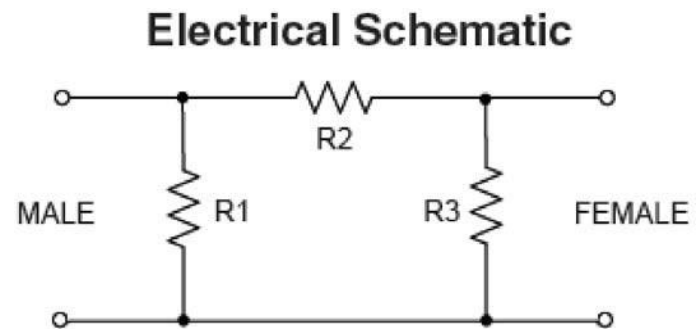
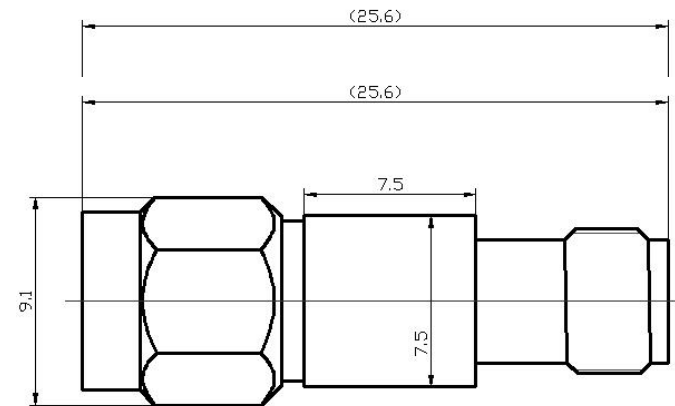
**Frequency:** DC-6GHz

**Attenuation:** 3dB

**Input Pwr.:** 2w

**VSWR:** 1.25(max); 1.11(typ.)

**Connector:** SMA(M) – SMA(F)



Typical Performance Data

Frequency (GHz)	Attenuation (dB)	VSWR (:1)
0.1	2.79	1.01
1	2.80	1.02
2	2.84	1.03
3	2.91	1.03
4	3.06	1.04
5	3.20	1.07
6	3.30	1.11



深圳市睿凡讯连科技有限公司

SHENZHEN RFCOMS TECHNOLOGY CO.,LTD

Connector,Cable,Testlead,  
Adapter,RF&MICROWAVE

## SMA-JK6-2-5

### Features:

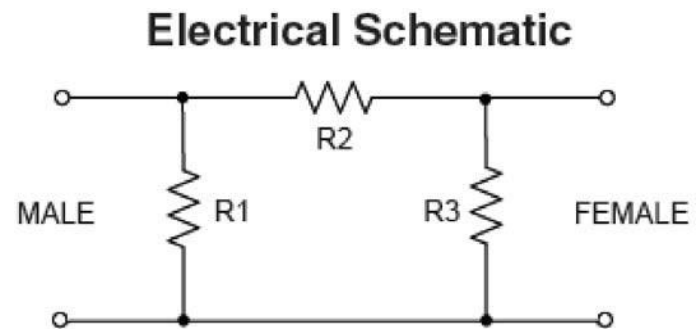
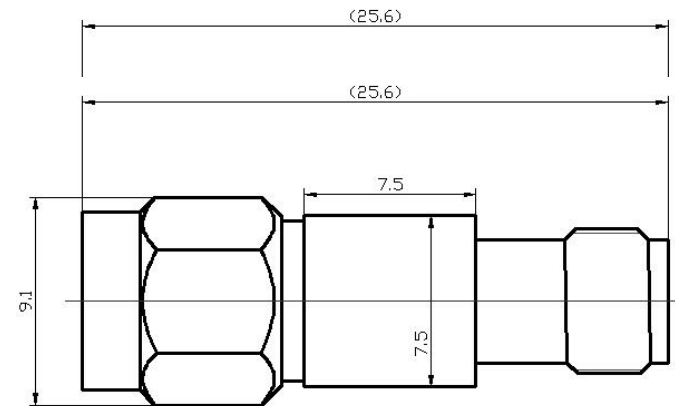
**Frequency:** DC-6GHz

**Attenuation:** 5dB

**Input Pwr.:** 2w

**VSWR:** 1.25(max); 1.15(typ.)

**Connector:** SMA(M) – SMA(F)



Typical Performance Data		
Frequency (GHz)	Attenuation (dB)	VSWR (:1)
0.1	4.68	1.01
1	4.93	1.03
2	5.06	1.06
3	5.14	1.12
4	5.24	1.13
5	5.30	1.12
6	5.29	1.11



深圳市睿凡讯连科技有限公司

SHENZHEN RFCOMS TECHNOLOGY CO.,LTD

Connector,Cable,Testlead,  
Adapter,RF&MICROWAVE

## SMA-JK6-2-6

### Features:

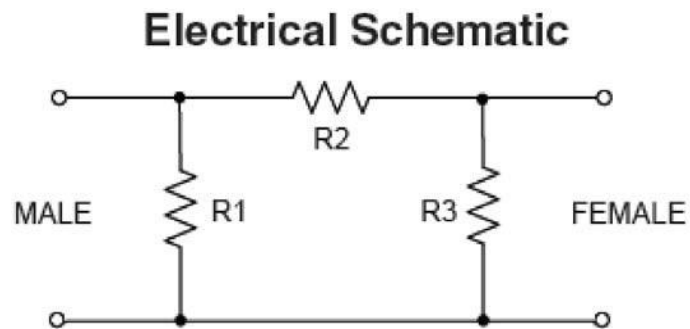
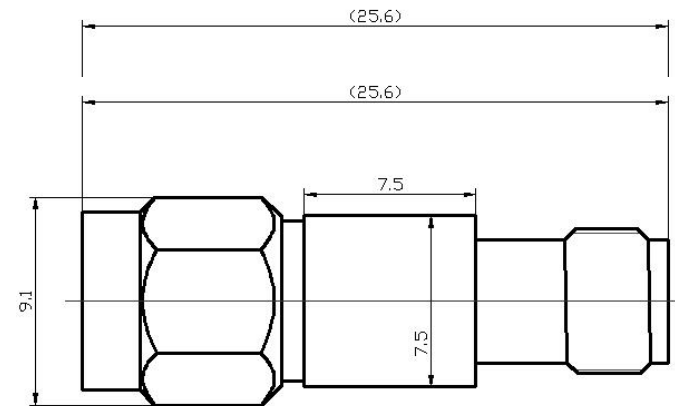
**Frequency:** DC-6GHz

**Attenuation:** 6dB

**Input Pwr.:** 2w

**VSWR:** 1.25(max); 1.15(typ.)

**Connector:** SMA(M) – SMA(F)



Typical Performance Data		
Frequency (GHz)	Attenuation (dB)	VSWR (:1)
0.1	5.70	1.01
1	6.00	1.03
2	6.17	1.06
3	6.21	1.11
4	6.32	1.15
5	6.33	1.13
6	6.30	1.12



深圳市睿凡讯连科技有限公司

SHENZHEN RFCOMS TECHNOLOGY CO.,LTD

Connector,Cable,Testlead,  
Adapter,RF&MICROWAVE

## SMA-JK6-2-10

### Features:

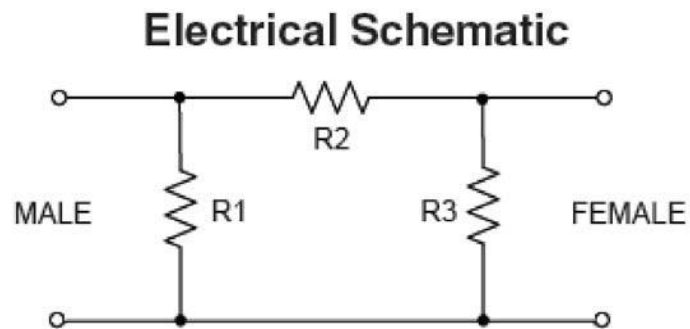
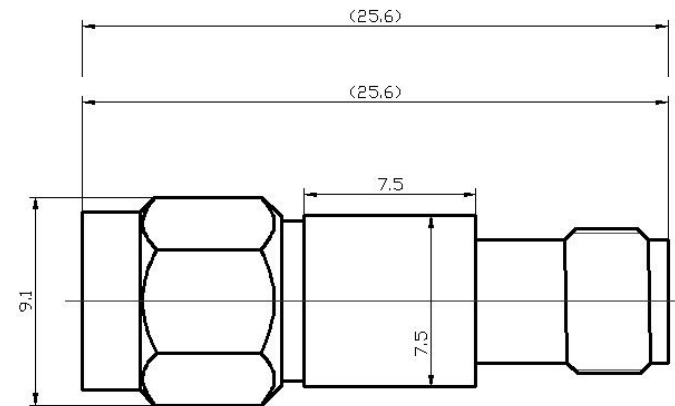
**Frequency:** DC-6GHz

**Attenuation:** 10dB

**Input Pwr.:** 2w

**VSWR:** 1.25(max); 1.03(typ.)

**Connector:** SMA(M) – SMA(F)



Typical Performance Data

Frequency (GHz)	Attenuation (dB)	VSWR (:1)
0.1	9.93	1.01
1	10.20	1.01
2	10.31	1.02
3	10.32	1.03
4	10.22	1.03
5	10.06	1.03
6	9.95	1.03



深圳市睿凡讯连科技有限公司

SHENZHEN RFCOMS TECHNOLOGY CO.,LTD

Connector,Cable,Testlead,  
Adapter,RF&MICROWAVE

## SMA-JK6-2-15

### Features:

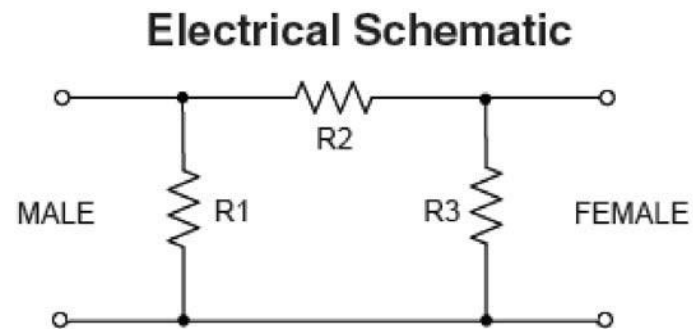
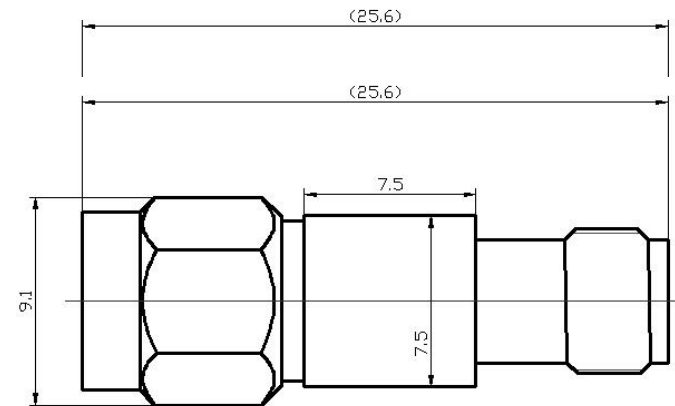
**Frequency:** DC-6GHz

**Attenuation:** 15dB

**Input Pwr.:** 2w

**VSWR:** 1.25(max); 1.07(typ.)

**Connector:** SMA(M) – SMA(F)



Typical Performance Data

Frequency (GHz)	Attenuation (dB)	VSWR (:1)
0.1	14.69	1.01
1	14.94	1.02
2	15.06	1.04
3	15.02	1.06
4	14.99	1.07
5	14.81	1.07
6	14.79	1.07



深圳市睿凡讯连科技有限公司

SHENZHEN RFCOMS TECHNOLOGY CO.,LTD

Connector,Cable,Testlead,  
Adapter,RF&MICROWAVE

## SMA-JK6-2-20

### Features:

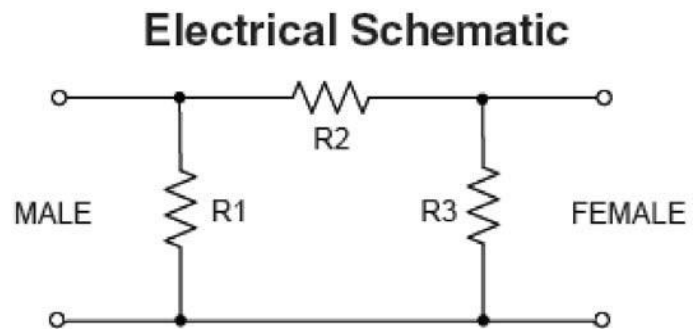
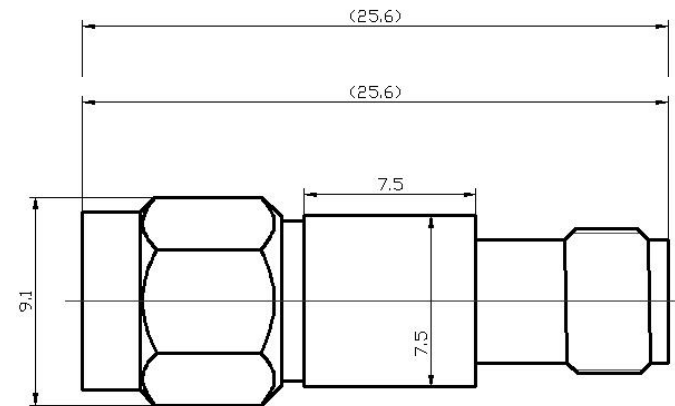
**Frequency:** DC-6GHz

**Attenuation:** 20dB

**Input Pwr.:** 2w

**VSWR:** 1.25(max); 1.02(typ.)

**Connector:** SMA(M) – SMA(F)



Typical Performance Data

Frequency (GHz)	Attenuation (dB)	VSWR (:1)
0.1	19.94	1.00
1	20.18	1.01
2	20.26	1.01
3	20.19	1.02
4	20.00	1.02
5	19.74	1.02
6	19.53	1.02





深圳市睿凡讯连科技有限公司

SHENZHEN RFCOMS TECHNOLOGY CO.,LTD

Connector,Cable,Testlead,  
Adapter,RF&MICROWAVE

## SMA-JK6-2-25

### Features:

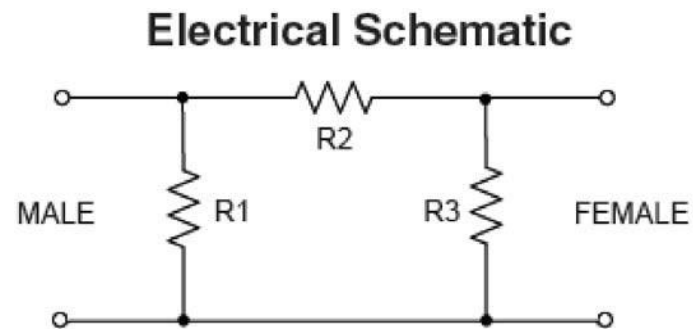
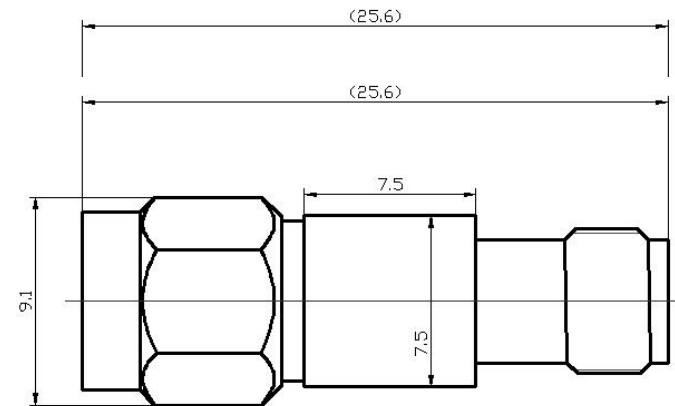
**Frequency:** DC-6GHz

**Attenuation:** 25dB

**Input Pwr.:** 2w

**VSWR:** 1.25(max); 1.07(typ.)

**Connector:** SMA(M) – SMA(F)



Typical Performance Data		
Frequency (GHz)	Attenuation (dB)	VSWR (:1)
0.1	24.77	1.00
1	25.02	1.01
2	25.17	1.01
3	25.14	1.03
4	25.00	1.04
5	24.80	1.06
6	24.67	1.07



深圳市睿凡讯连科技有限公司

SHENZHEN RFCOMS TECHNOLOGY CO.,LTD

Connector,Cable,Testlead,  
Adapter,RF&MICROWAVE

## SMA-JK6-2-30

### Features:

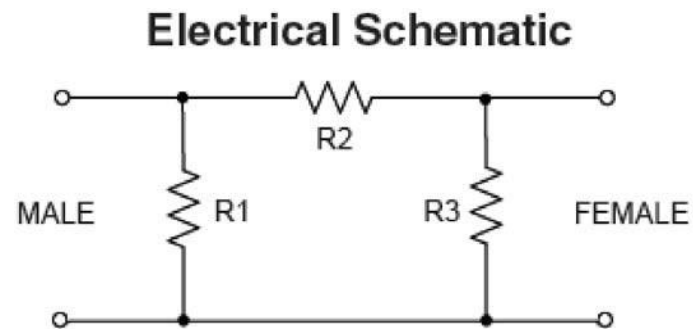
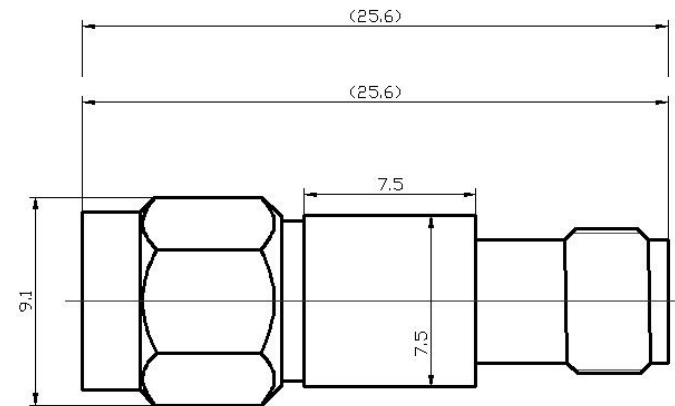
**Frequency:** DC-6GHz

**Attenuation:** 30dB

**Input Pwr.:** 2w

**VSWR:** 1.25(max); 1.11(typ.)

**Connector:** SMA(M) – SMA(F)



Typical Performance Data		
Frequency (GHz)	Attenuation (dB)	VSWR (:1)
0.1	30.35	1.00
1	30.63	1.01
2	30.75	1.03
3	30.73	1.04
4	30.50	1.06
5	30.22	1.09
6	29.97	1.11



深圳市睿凡讯连科技有限公司

SHENZHEN RFCOMS TECHNOLOGY CO.,LTD

Connector,Cable,Testlead,  
Adapter,RF&MICROWAVE

## SMA-JK6-2-40

### Features:

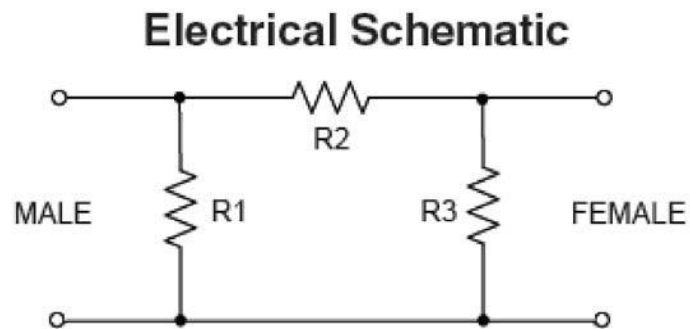
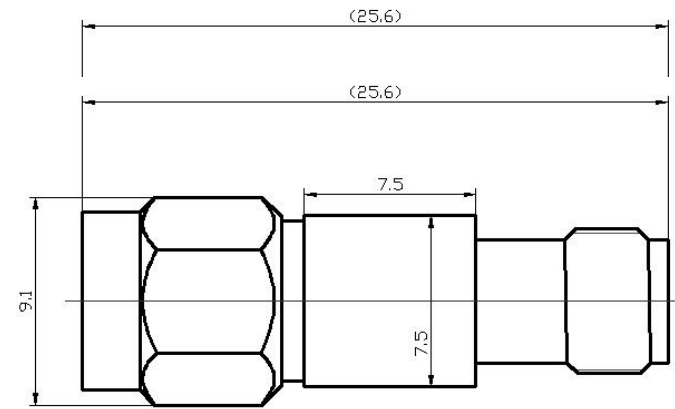
**Frequency:** DC-6GHz

**Attenuation:** 40dB

**Input Pwr.:** 2w

**VSWR:** 1.25(max); 1.05(typ.)

**Connector:** SMA(M) – SMA(F)



Typical Performance Data		
Frequency (GHz)	Attenuation (dB)	VSWR (:1)
0.1	40.38	1.00
1	40.54	1.01
2	40.59	1.01
3	40.56	1.01
4	40.54	1.01
5	40.49	1.03
6	40.51	1.04



深圳市睿凡讯连科技有限公司

SHENZHEN RFCOMS TECHNOLOGY CO.,LTD

Connector,Cable,Testlead,  
Adapter,RF&MICROWAVE

## SMA-JK6-2-50

### Features:

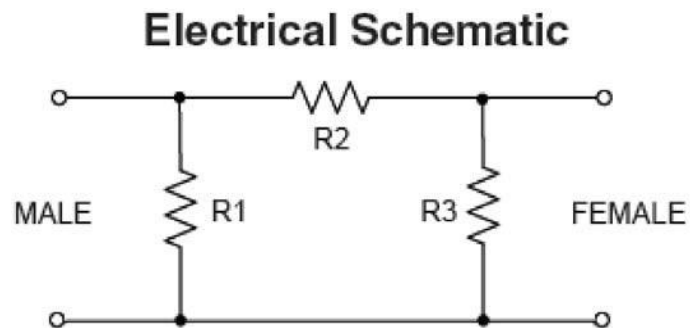
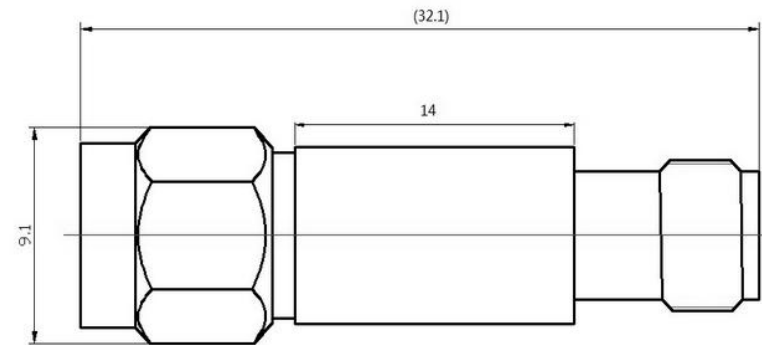
**Frequency:** DC-6GHz

**Attenuation:** 50dB

**Input Pwr.:** 2w

**VSWR:** 1.25(max); 1.05(typ.)

**Connector:** SMA(M) – SMA(F)



Typical Performance Data		
Frequency (GHz)	Attenuation (dB)	VSWR (:1)
0.1	49.75	1.00
1	50.02	1.01
2	50.01	1.01
3	50.18	1.01
4	50.14	1.02
5	50.15	1.04
6	50.40	1.05



深圳市睿凡讯连科技有限公司

SHENZHEN RFCOMS TECHNOLOGY CO.,LTD

Connector,Cable,Testlead,  
Adapter,RF&MICROWAVE

## SMA-JK6-2-60

### Features:

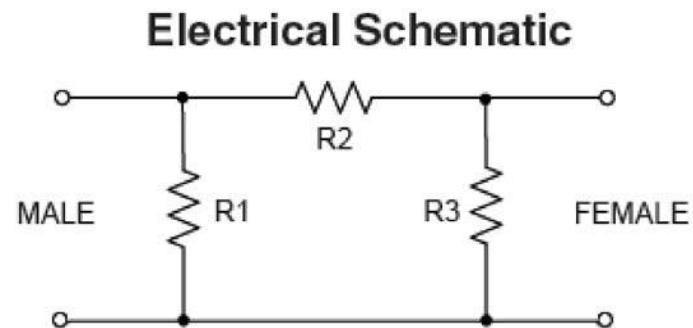
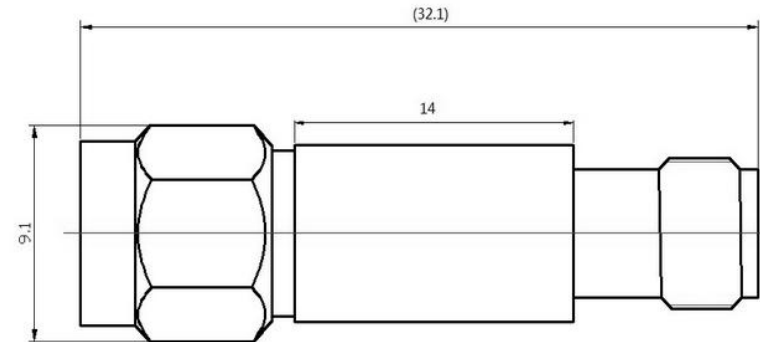
**Frequency:** DC-6GHz

**Attenuation:** 60dB

**Input Pwr.:** 2w

**VSWR:** 1.25(max); 1.1(typ.)

**Connector:** SMA(M) – SMA(F)



Typical Performance Data		
Frequency (GHz)	Attenuation (dB)	VSWR (:1)
0.1	60.81	1.00
1	61.13	1.01
2	61.11	1.03
3	61.51	1.05
4	61.08	1.06
5	61.17	1.08
6	61.10	1.09