

产品特点

- DC~18GHz 使用频率范围
- 低驻波比

应用场景

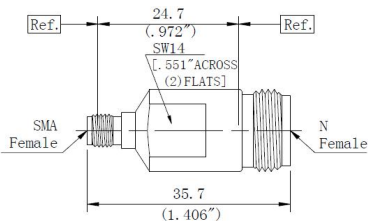
- 通用测试
- 精密测量

产品规格

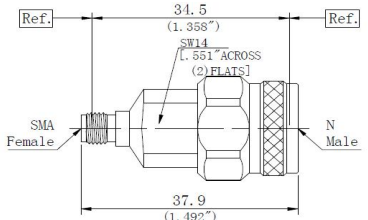
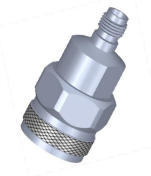
- 特殊阻抗: 50ohm
- 工作频率: DC~18GHz
- 耐用性: 500 次
- 温度范围: -55℃~+165℃

材料/表面处理

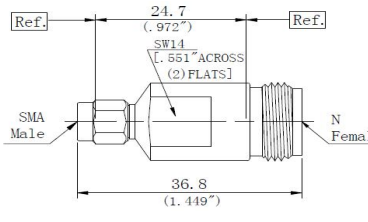
- 主体: 不锈钢SU303 抛光钝化
- 中心导体: 镀青铜 镀金(MIL-G-45204)
- 绝缘体: PEI
- 符合N/SMA Interfaces PER MIL-STD-348A界面尺寸



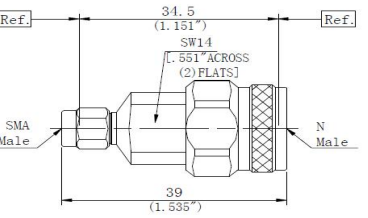
描述:	N母转SMA母
PN:	AD18270202
驻波:	DC-18GHz...1.15:1(max)



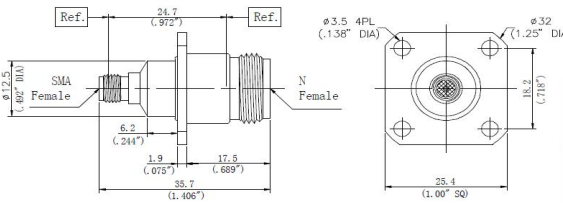
描述:	N公转SMA母
PN:	AD18270102
驻波:	DC-18GHz...1.15:1(max)



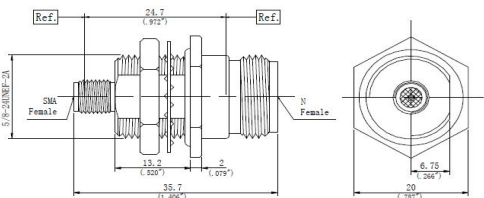
描述:	N母转SMA公
PN:	AD18270201
驻波:	DC-18GHz...1.15:1(max)



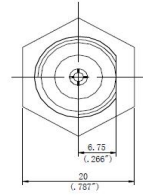
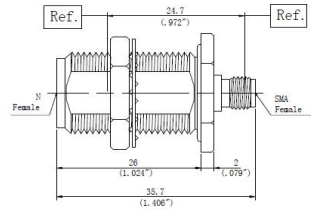
描述:	N公转SMA公
PN:	AD18270101
驻波:	DC-18GHz...1.15:1(max)



描述:	N母转SMA母
PN:	AD18270202F
驻波:	DC-18GHz...1.15:1(max)



描述:	N母转SMA母
PN:	AD18270202YB
驻波:	DC-18GHz...1.15:1(max)



描述:	N母转SMA母
PN:	AD18270101Y
驻波:	DC-18GHz...1.15:1(max)

备注:

- 1、所有物理尺寸单位 mm, 尺寸公差 $\pm 1\%$ 。
- 2、网络分析仪在整个频段内进行测试, 100%电性能测试。
- 3、可按照客户要求订制特殊连接器和特殊衰减量。

深圳市睿凡讯连科技有限公司

网址: [www.rfcoms.com](http://www.rfcoms.com)

电话: +86 13480725660

Email: [luke@rfcoms.com](mailto:luke@rfcoms.com)

本技术资料产权归属于深圳睿凡公司, 未经允许, 不得复制、摘抄或转交的其他第三方公司与机构。规格如有更改, 恕不另行通知

**AD1827 50Ω DC~18GHz**  
**SMA-N High Performance 50ohm Between Series Stainless Steel Adapter**



Ver A/0 Release Date March, 2018 P/N:AD1827

**Features**

- DC~18GHz Frequency Range
- Low VSWR

**Applications**

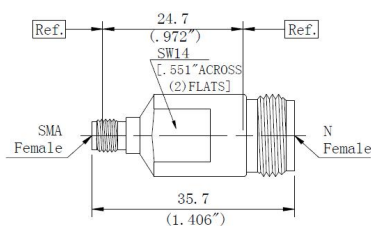
- General purpose test
- Precision measurements

**Specifications**

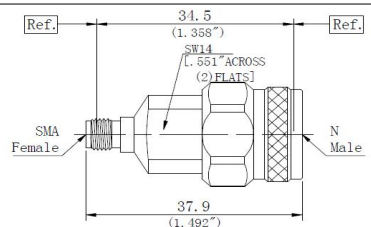
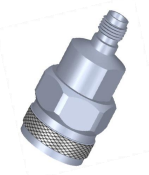
- Impedance: 50ohm
- Frequency: DC~18GHz
- Durability: 500 cycles
- Temp. Range: -55°C~+165°C

**Material/Finishing**

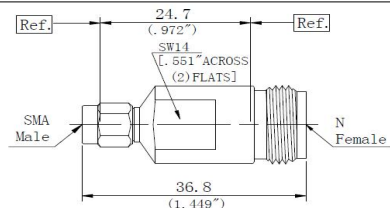
- Housing: Stainless Steel SU303
- Center contact: Beryllium Copper
- Insulators: PEI
- N/SMA Interfaces PER MIL-STD-348A
- Polished/Passivated
- Gold plated(MIL-G-45204)



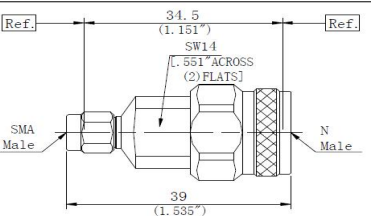
Description:	N(f) to SMA(f)
PN:	AD18270202
VSWR:	DC-18GHz . . .1.15:1(max)



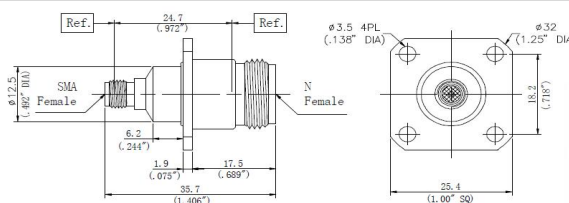
Description:	N(m) to SMA(f)
PN:	AD18270102
VSWR:	DC-18GHz . . .1.15:1(max)



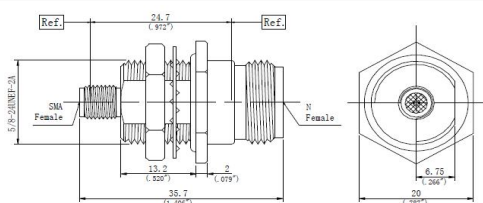
Description:	N(f) to SMA(m)
PN:	AD18270201
VSWR:	DC-18GHz . . .1.15:1(max)



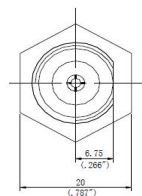
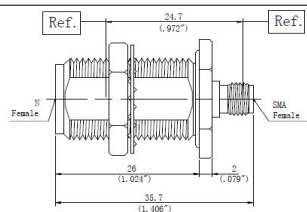
Description:	N(m) to SMA(m)
PN:	AD18270101
VSWR:	DC-18GHz . . .1.15:1(max)



Description:	N(f) to SMA(f)
PN:	AD18270202F
VSWR:	DC-18GHz . . .1.15:1(max)



Description:	N(f) to SMA(f)
PN:	AD18270202YB
VSWR:	DC-18GHz . . .1.15:1(max)



Description:	N(f) to SMA(f)
PN:	AD18270101Y
VSWR:	DC-18GHz . . .1.15:1(max)

#### Remark

- 1、 All physical dimensions are in mm and the tolerance is  $\pm 1\%$
- 2、 The network analyzer tests in the whole frequency band, 100% electrical performance test.
- 3、 Special connectors and special attenuation can be customized according to customer requirements

Shenzhen RFcoms Technology Co.,LTD

Website: [www.rfcoms.com](http://www.rfcoms.com)

Tell: +86 13480725660

Email: [luke@rfcoms.com](mailto:luke@rfcoms.com)

The rights of technical information provided on this sheet belongs to RFcoms. Contents cannot be distributed to other third-party companies without permission. The specifications are subjected to change without prior notice