



产品特点

应用场景

- ## 产品规格

- 主体: 不锈钢SU303 抛光钝化
- 中心导体: 镀青铜 镀金(MIL-G-45204)
- 绝缘体: PEI



本技术资料产权归属于深圳睿凡公司，未经允许，不得复制、摘抄或转交的其他第三方公司与机构。规格如有更改，恕不另行通知

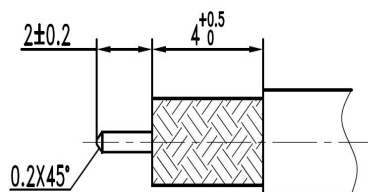


Features

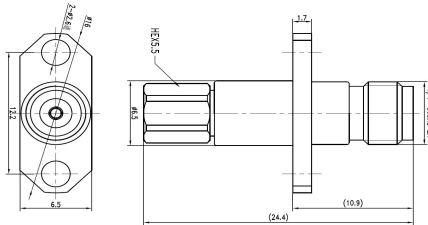
P/N:CC0040

Applications

- Material/Finishing



Description:	2.92mm female for RG405 cable
PN:	280CC004002B
VSWR:	DC-40GHz . . . 1.25:1(max)



Description:	2.92mm female flange for SS405
PN:	280CC004002F
VSWR:	DC-40GHz . . . 1.25:1 (max)

The rights of technical information provided on this sheet belongs to RFcoms. Contents cannot be distributed to other third-party companies without permission. The specifications are subjected to change without prior notice