

产品特点

- DC~67GHz 使用频率范围
- 低驻波比

应用场景

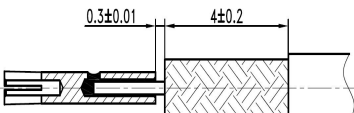
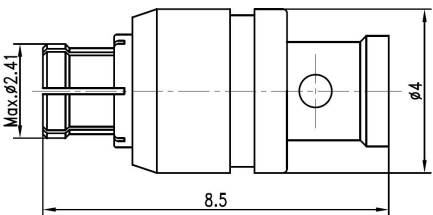
- 通用测试
- 精密工作台测量
- 测试端口
- 组件定制

产品规格

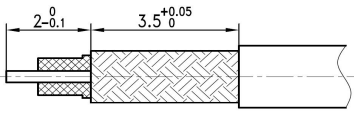
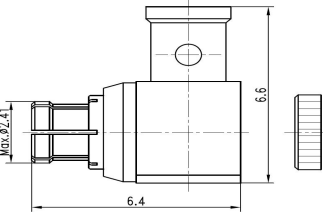
- 特殊阻抗: 50ohm
- 工作频率: DC~67GHz
- 耐用性: 500 次
- 温度范围: -55℃~+165℃

材料/表面处理

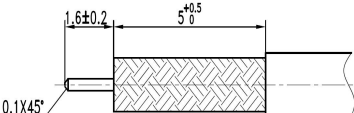
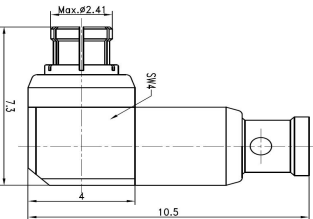
- 主体: 镀青铜 镀金
- 中心导体: 镀青铜 镀金
- 绝缘体: PEI&PTFE



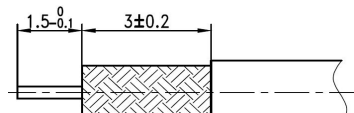
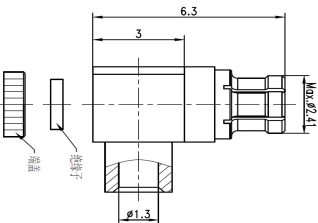
描述:	SSMP 母头接RG047 SS047线缆,直焊式
PN:	047CC0067SSM02
驻波:	DC-40GHz...1.38:1(max)



描述:	SSMP 母弯头接SS047线缆,直焊式
PN:	047CC0067SSM02L
驻波:	DC-18GHz...1.25:1(max)



描述:	SSMP 母弯头接SS047线缆,直焊式
PN:	047CC0067SSM02LA
驻波:	DC-50GHz...1.35:1(max)



描述:	SSMP 母弯头接SS047线缆,直焊式
PN:	047CC0040SM02LC
驻波:	DC-18GHz...1.25:1(max)

备注:

- 1、所有物理尺寸单位 mm, 尺寸公差±1%。
- 2、网络分析仪在整个频段内进行测试, 100%电性能测试。
- 3、可按照客户要求订制特殊连接器和特殊衰减量。

深圳市睿凡讯连科技有限公司  
网址: www.rfcoms.com

电话: +86 13480725660  
Email: luke@rfcoms.com

本技术资料产权归属于深圳睿凡公司, 未经允许, 不得复制、摘抄或转交的其他第三方公司与机构。规格如有更改, 恕不另行通知

**SSMP 50Ω DC~67GHz**  
**SMP High Performance 50ohm Connector For Cable**



Ver A/0 Release Date March, 2019 P/N:CC0067SSM

**Features**

- DC~67GHz Frequency Range
- Low VSWR

**Applications**

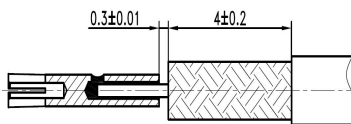
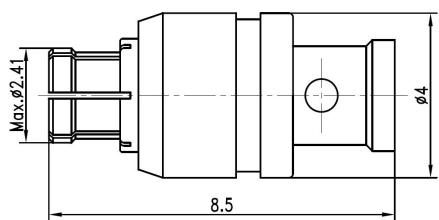
- General purpose test
- Precise Bench-top Testing
- Vector Network Analyzer Test Port
- Custom Cable Assembly

**Specifications**

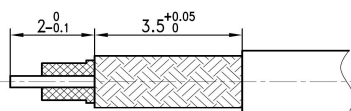
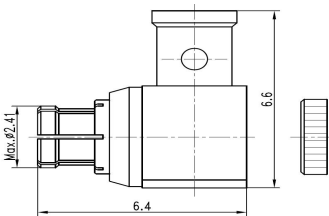
- Impedance: 50ohm
- Frequency: DC~67GHz
- Durability: 500 cycles
- Temp. Range: -55℃~+165℃

**Material/Finishing**

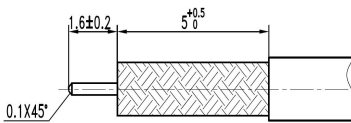
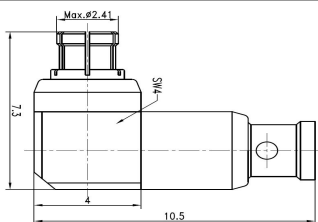
- Housing: Beryllium Copper
- Center contact: Beryllium Copper
- Insulators: PEI&PTFE
- Gold plated
- Gold plated



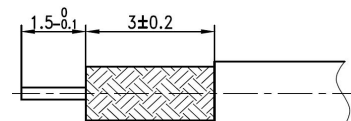
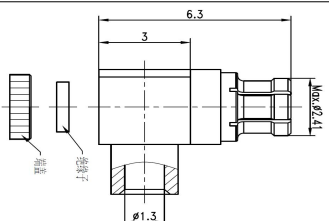
Description:	SSMP female for SS047 cable
PN:	047CC0067SSM02
VSWR:	DC-40GHz . . . 1.38:1 (max)



Description:	SSMP female R/A for SS047 cable
PN:	047CC0067SSM02L
VSWR:	DC-18GHz . . . 1.25:1 (max)



Description:	SSMP female R/A for SS047 cable
PN:	047CC0067SSM02LA
VSWR:	DC-50GHz . . . 1.35:1 (max)



Description:	SSMP female R/A for SS047 cable
PN:	047CC0040SM02LC
VSWR:	DC-18GHz . . . 1.25:1 (max)

**Remark**

- 1、 All physical dimensions are in mm and the tolerance is  $\pm 1\%$
- 2、 The network analyzer tests in the whole frequency band, 100% electrical performance test.
- 3、 Special connectors and special attenuation can be customized according to customer requirements

Shenzhen RFcoms Technology Co.,LTD

Website: [www.rfcoms.com](http://www.rfcoms.com)

Tell: +86 13480725660

Email: [luke@rfcoms.com](mailto:luke@rfcoms.com)

The rights of technical information provided on this sheet belongs to RFcoms. Contents cannot be distributed to other third-party companies without permission. The specifications are subjected to change without prior notice